

Thinking^{3D}

FLOWER TO FRAME

an exhibition in conjunction with Magdalen College

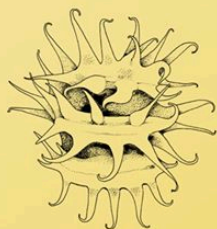
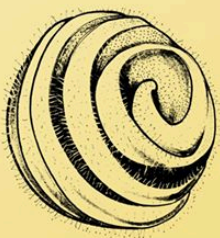
1 June to 31 August 2019

Oxford Botanic Garden

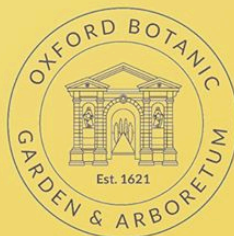
Herbarium Room

How is a botanist's sketch in the field transformed into a scientific illustration or **3D** replica?

What can detailed **illustrations** of a specimen tell us that photographs cannot?



MAGDALEN COLLEGE
UNIVERSITY OF OXFORD



for more information contact
Oxford Botanic Garden
admin@obg.ox.ac.uk
01865 286692